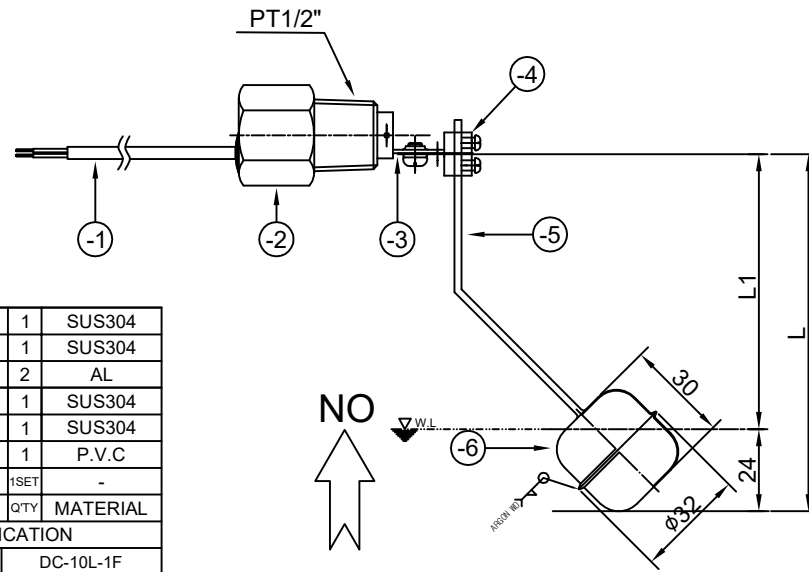
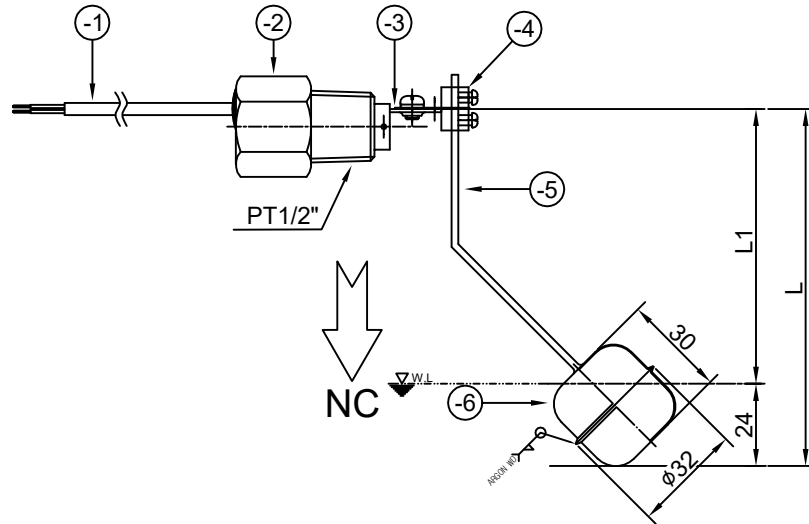


DWG NO
ON

THIS DRAWING IS PROPRIETARY TO DSS
NO PART OF THIS DRAWING MAY BE REPRODUCED
WITHOUT THE PERMISSION OF DSS
이 기밀로 관리될 수 있음



-6	FLOAT	1	SUS304
-5	SHAFT	1	SUS304
-4	STOPPER	2	AL
-3	PADDLE	1	SUS304
-2	BODY	1	SUS304
-1	LEAD WIRES	1	P.V.C
1	DFS-2-1/2SR	1SET	-

ITEM NO	PART NAME	Q'TY	MATERIAL
SPECIFICATION			
MODEL NAME		DC-10L-1F	
PRESSURE		MAX.10Kg _f /cm ²	
TEMPERATURE		MAX.200°C	
SWITCHING CURRENT		AC220V, 0.2A, 50VA	
MOUNTING METHOD		HORIZONTAL, VERTICAL	
MOUNTING SIZE		PT 1/2"	
APPLICATIONS		High Viscosity Liquid	
REMARKS :			

배부처

NO	DATE	REVISION	APPD BY	BY	TOLERANCES-UNLESS OTHERWISE SPECIFIED
1	2014.01.27	1	K.B	HAN	WORK SIZE OVER 10" INCL. TURN PUNCH DIST OF HOLE STR. ±0.1 ±0.2 ±0.3 ±0.5 ±0.7 ±0.9 ±1.2 ±1.3 ±1.5 ±1.8 ±2.0 ±2.5 ±3.3 ±4.0 ±5.0 ±1.0 ±1.0 ±1.0 ±2.0
2	2014.01.27	2	K.B	HAN	WORK SIZE OVER 10" INCL. TURN PUNCH DIST OF HOLE STR. ±0.1 ±0.2 ±0.3 ±0.5 ±0.7 ±0.9 ±1.2 ±1.3 ±1.5 ±1.8 ±2.0 ±2.5 ±3.3 ±4.0 ±5.0 ±1.0 ±1.0 ±1.0 ±2.0
3	2014.01.27	3	K.B	HAN	WORK SIZE OVER 10" INCL. TURN PUNCH DIST OF HOLE STR. ±0.1 ±0.2 ±0.3 ±0.5 ±0.7 ±0.9 ±1.2 ±1.3 ±1.5 ±1.8 ±2.0 ±2.5 ±3.3 ±4.0 ±5.0 ±1.0 ±1.0 ±1.0 ±2.0
4	2014.01.27	4	K.B	HAN	WORK SIZE OVER 10" INCL. TURN PUNCH DIST OF HOLE STR. ±0.1 ±0.2 ±0.3 ±0.5 ±0.7 ±0.9 ±1.2 ±1.3 ±1.5 ±1.8 ±2.0 ±2.5 ±3.3 ±4.0 ±5.0 ±1.0 ±1.0 ±1.0 ±2.0
5	2014.01.27	5	K.B	HAN	WORK SIZE OVER 10" INCL. TURN PUNCH DIST OF HOLE STR. ±0.1 ±0.2 ±0.3 ±0.5 ±0.7 ±0.9 ±1.2 ±1.3 ±1.5 ±1.8 ±2.0 ±2.5 ±3.3 ±4.0 ±5.0 ±1.0 ±1.0 ±1.0 ±2.0
6	2014.01.27	6	K.B	HAN	WORK SIZE OVER 10" INCL. TURN PUNCH DIST OF HOLE STR. ±0.1 ±0.2 ±0.3 ±0.5 ±0.7 ±0.9 ±1.2 ±1.3 ±1.5 ±1.8 ±2.0 ±2.5 ±3.3 ±4.0 ±5.0 ±1.0 ±1.0 ±1.0 ±2.0
7	2014.01.27	7	K.B	HAN	WORK SIZE OVER 10" INCL. TURN PUNCH DIST OF HOLE STR. ±0.1 ±0.2 ±0.3 ±0.5 ±0.7 ±0.9 ±1.2 ±1.3 ±1.5 ±1.8 ±2.0 ±2.5 ±3.3 ±4.0 ±5.0 ±1.0 ±1.0 ±1.0 ±2.0
8	2014.01.27	8	K.B	HAN	WORK SIZE OVER 10" INCL. TURN PUNCH DIST OF HOLE STR. ±0.1 ±0.2 ±0.3 ±0.5 ±0.7 ±0.9 ±1.2 ±1.3 ±1.5 ±1.8 ±2.0 ±2.5 ±3.3 ±4.0 ±5.0 ±1.0 ±1.0 ±1.0 ±2.0
9	2014.01.27	9	K.B	HAN	WORK SIZE OVER 10" INCL. TURN PUNCH DIST OF HOLE STR. ±0.1 ±0.2 ±0.3 ±0.5 ±0.7 ±0.9 ±1.2 ±1.3 ±1.5 ±1.8 ±2.0 ±2.5 ±3.3 ±4.0 ±5.0 ±1.0 ±1.0 ±1.0 ±2.0
10	2014.01.27	10	K.B	HAN	WORK SIZE OVER 10" INCL. TURN PUNCH DIST OF HOLE STR. ±0.1 ±0.2 ±0.3 ±0.5 ±0.7 ±0.9 ±1.2 ±1.3 ±1.5 ±1.8 ±2.0 ±2.5 ±3.3 ±4.0 ±5.0 ±1.0 ±1.0 ±1.0 ±2.0

DONG SUNG SENSORS CO.,LTD TEL:(02)2101-0688-9 FAX:(02)2101-0687			
표준	DRWN BY J.H.Han	DSND BY K.B.HAN	CHKD BY K.B.HAN
임시	DATE 2018.12.22.	DATE 2018.12.22.	

UNIT 단위	MM, INCH	APPAR.	-
SCALE 척도	N/S	TITLE 제목	DC-10L-1F
3RD ANGLE 3각법		REF. NO 참고도면	-
		DWG. NO 도면번호	1/1